



PRASHANTH HOMES

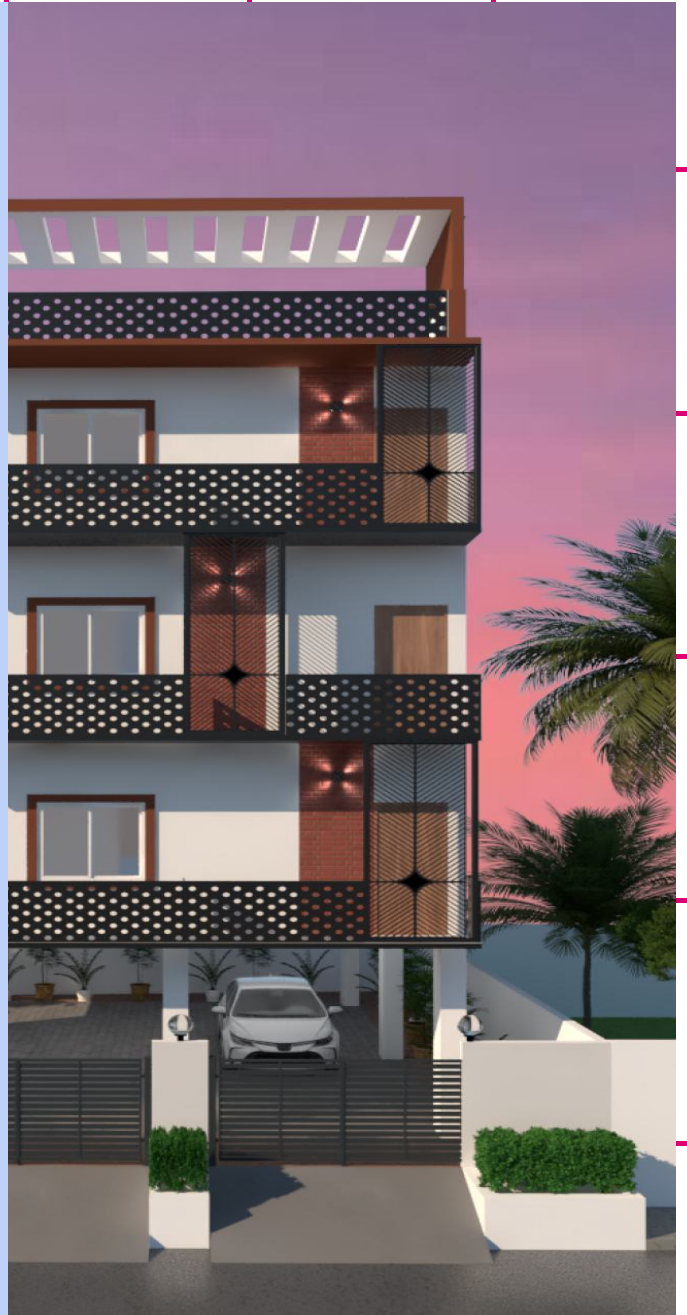
Mallow



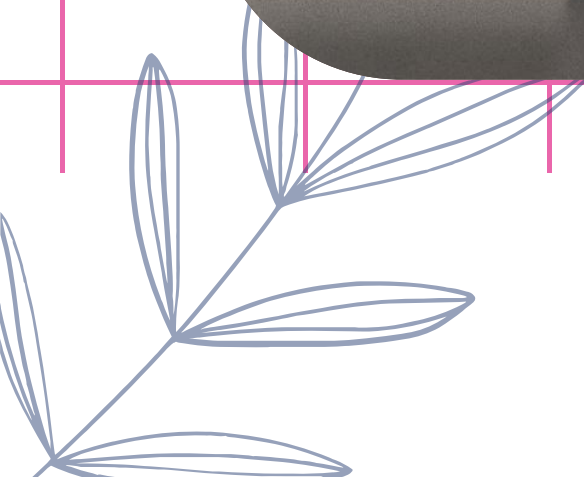
Who We Are

Prashanth Homes was started in 2012 ,With a steadfast commitment to excellence, we have successfully completed over 100 projects ,each a testament to our dedication and proficiency. Our ISO certification underscores our unwavering commitment to quality and customer satisfaction. We take pride in our in house team of skilled labourers who possess unparalleled expertise in their craft. Coupled with our insistence on using only the highest quality materials, we ensure that every project we undertake is executed with precision and finesse.

Elevate Your Lifestyle,
Secure Your Sanctuary –
Welcome to Your New
Apartment, In Chennai



Elevation



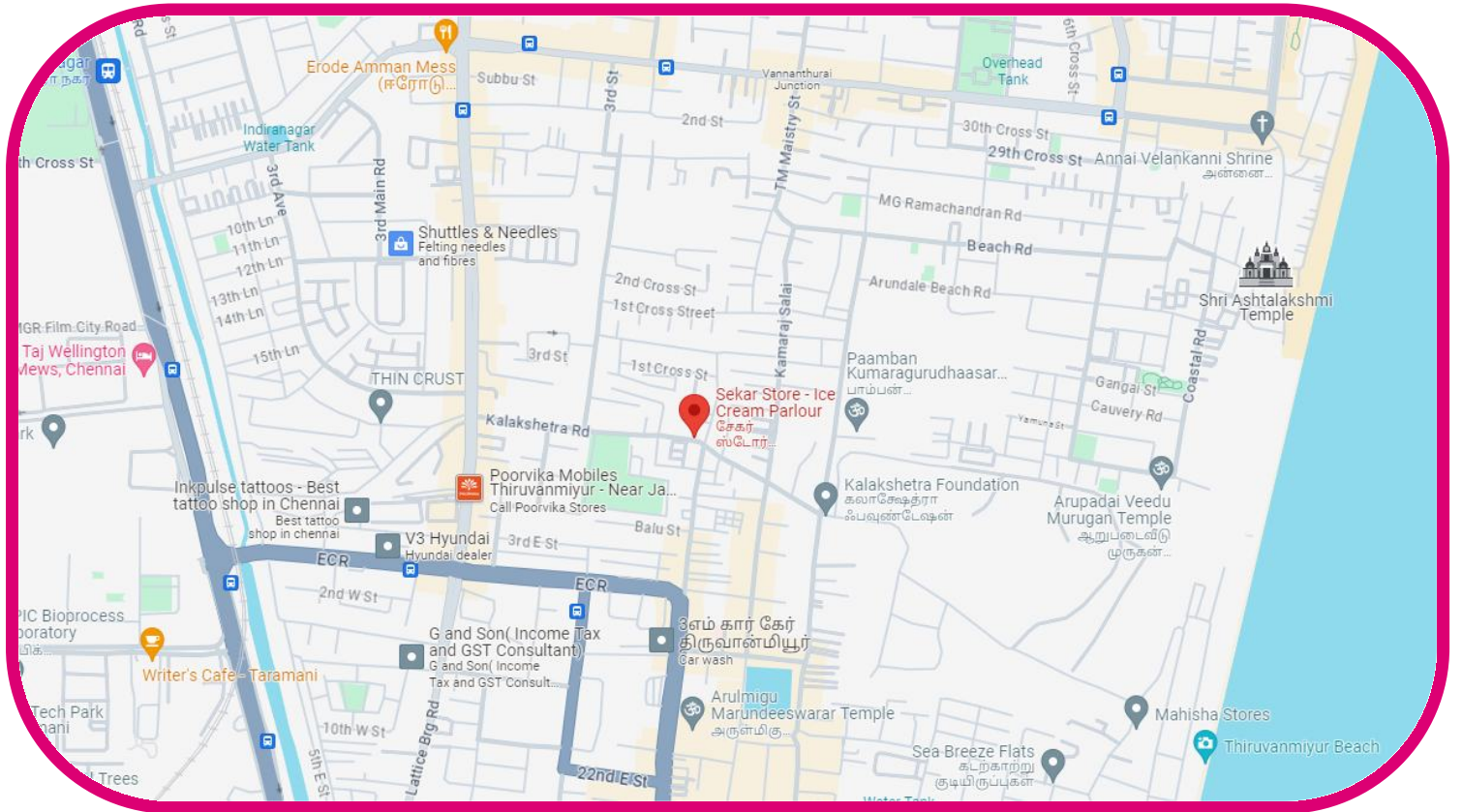
Floor Plan



Car Parking



Location



Near To Temples



Near To PVR Cinemas



Near To Hospitals

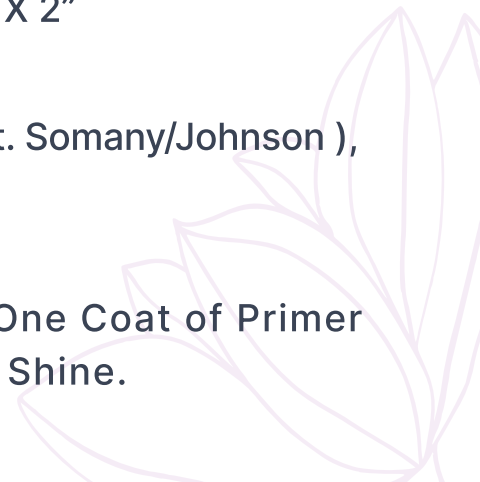


Near To School



Specifications

- Structure** : RCC Framed Structure With Floor to Ceiling height of 10 ft 3inch
- Bricks** : First Quality Wire Cut Red Bricks
- Steel** : ARS Steel or Pulkit Steels
- Cement** : RAMCO Cement / Chettinad Cement / Zuari Cement / Priya Cements
- Doors** :
- Main Door : Thick Teak Wood,Door Size 7 Ft X 3.6 Ft 30 mm
 - Bedroom Door : Membrane Door of Size 7 Ft X 3 Ft Thickness 30 mm
 - Bathroom Door : WPC Frame of Size 7 Ft X 2.5 Ft Thickness 25 mm
- Door Frames** :
- Main Door Frame: Teak Wood 1st Quality,Frame Size Of 7 Ft X 3.6 Ft & Thickness 5" X 4"
 - Bedroom Door Frame : Teak Wood 2nd Quality ,Frame Size Of 7 Ft X 3 Ft & Thickness 4" X 2.5"
 - Bathroom Door Frame: WPC Frame of Size 7 Ft X 2.5 Ft Thickness 4" X 2"
- Flooring** : 4" X 2" Vitrified Tiles (Rs.65/- Per Sq. Ft. Somany/Johnson), Wall Tile 18×12 (Rs.50/- Per Sq. Ft),
- Interior Wall** : [Asian Paints] Two Coats of Putty ,One Coat of Primer And Two Coats of Tractor Emulsion Shine.



- Exterior Wall** : [Asian Paints] External 1 Coat of Waterproof Primer, And 2 Coats of Exterior ACE.
- Lift** : Emperor Lift or Equivalent (Automatic Door Close S.S. Finish With ARS System)
- Kitchen** : High-Grade Polished Jet Black Granite Top for Kitchen Platform and Stainless Steel Kitchen Sink(Nirali/Crown). 3 Feet Height Wall Dado
- Bathroom** : Anti-Skid Ceramic Tile Flooring, Ceramic Wall Tile upto Seven Foot Level. Concealed Plumbing Arrangements and Concealed PVC Pipeline of Slow Guard Make for Hot Water Pipeline (CPVC)
Parryware Closet, Bathroom Fittings-CP Finish. (Pipes - PVC Finolex)
- Wires** : Orbit/Finolex
- Switches** : Anchor ROMA
- Electrical Fixtures** : Three Phase Connection with Manual Change Over the Facility And Concealed Copper Wiring, Points for Telephone, TV, Fridge, Washing Machine, Grinder, A/C, Fan and Light Points in Rooms. Provision for Inverter. Orbit Wire and Metal Box Switch Board (Telephone Cable in The Living Room)
- Weathering Coarse** : Heat Reflective White Ceramic Cooling Tiles of Size 300 mm X 300 mm
- Staircase Steps: & Landing Area** : Granite Floor With Stainless Hand Rail.



Wardrobe : One Side Polished RCC Slab For Wardrobes Below Kitchen Platform And Also In Shelves Provided In The Kitchen. One Bedroom Shall Have A Shelf.

Sump &OHT : RCC Sump with Anti-Fungal Tile

Special Features :

- Terrace Gardening
- Dedicated Walking Area
- Rain Water Harvesting
- Safety Grills
- Name Board
- CCTV Surveillance Camera with Recording
- Cooling Tiles
- Inverter Provision for all Units.





PRASHANTH HOMES

Visit us

No: 17/13, College Road,
Nanganallur, Chennai - 600114

CONTACT US

+91 9884000857

+91 9043747123

prashanth@prashanthhomes.in